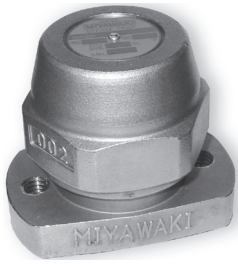


# DC1-21U · SU2-32U 型

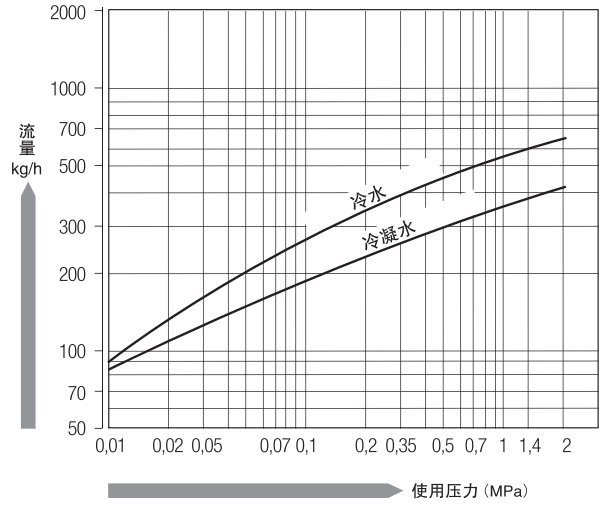


DC1-21U

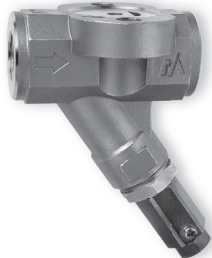


SU2-32U

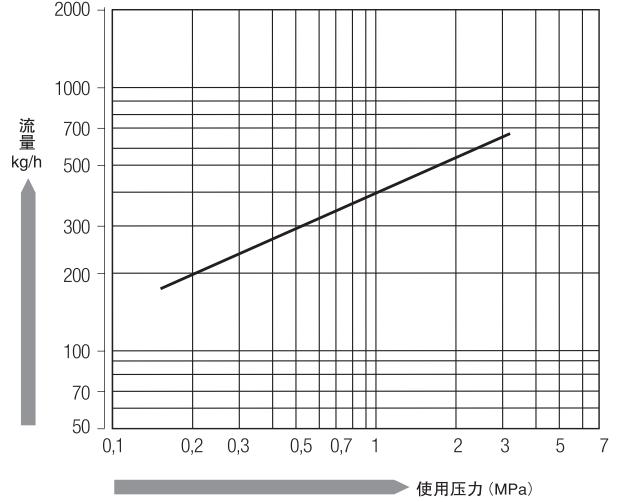
DC1-21U-流量图



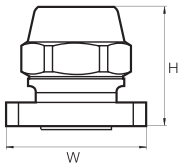
## UNC



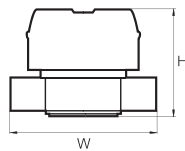
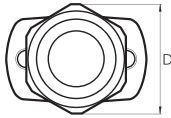
SU2-32U-流量图



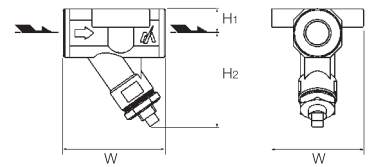
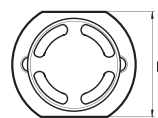
### 外形尺寸/规格一览



DC1-21U



SU2-32U



UNC

型号	连接		工作压力范围 (MPa)	最高使用温度 (°C)	阀体材质	尺寸 (mm)				重量 (kg)
	方式	口径 (A)				L	H1/D	H2/H	W	
DC1-21U	通用双螺栓	—	2.1	235	不锈钢 (SCS13A)	—	55	62	70	0.8
SU2-32U	通用双螺栓	—	3.2	350	不锈钢 (SUS 420J2)	—	60	55	70	0.8
UNC	螺纹Rc(PT)	15	3.2	400	不锈钢 (SCS14)	80	19	73	72	1.0
		20								
UNC-W	承插焊	15	3.2	400	不锈钢 (SCS14)	80	19	73	72	1.0
		20								